

No.AC900

Dual R12, R134a Air Conditioning Manifold & Gauge Set

1/4" SAE Connections

Set includes the manifold set with sight glass and gauges, 6ft hoses and 360° swivel manual service couplers to service R-12 or R-134a refrigerant gasses.

Supplied in blow mold storage case. **Gauge Pressures:** -30Hg Vac. to 250psi. 0 to 500psi.



No.AC901
Dual R12, R134a A/C
Manifold and Gauges

1/4" SAE
Connections

Silicone vibration free gauges. Extruded aluminium body with sight glass for maximum safety.

AC901BLUE 250psi Replacement Gauge

AC901RED 500psi Replacement Gauge



No.AC911

R134a 360° Swivel Manual Service Couplers 1/4"SAE

360° Swivel manual service couplers with 1/4"SAE threads. Quick release half coupler attaches to R134a coupler on vehicle. Then open by turning the valve knob clockwise. Makes connection and disconnection much safer as valve controls pressure release. Colour coded for high and low pressure.



No.AC910

R12, R134a Charging Hoses

Premium refrigerant charging hoses are built for long life and dependability. A strong six sided crimp provides a reliable connection between the hose and barb, even at maximum pressure. The coupler nuts are deeply knurled for quick finger-tightening. **Capacity:** (740/3700psi) 6ft(1.8m)



No.AC914

Conversion Adaptor

For R134a 1/4"SAE Manifold to connect onto ACME cylinders



No.AC915

Conversion Adaptor

For R134a ACME Manifold to connect onto 1/4"SAE cylinders



No.AC901BRASS

Brass Valve Depressor

For AC910 Charging Hose



No.AC910RUBBER

Black Gasket seal

For AC910 Charging Hose



No.AC910SCREW

Brass Valve Depressor

For AC910 Charging Hose



No.AC910SEAL

White Neoprene Seal

For AC910 Charging Hose



No.AC950

4.5CFM Vacuum Pump

Vacuum pump removes moisture and air from the air conditioning system. By lowering the pressure within the system, vaporizing the moisture, then exhausting it along with air.

Free Air Displacement: 4.5CFM

Ultimate Vacuum: 150 microns

Motor: 1440RPM. 1/2HP 240volt. 50Hz

Weight: 23.5lb.(10.5kg)



No.AC912

R134a Manual Service Couplers 90° 1/4"SAE

90° Manual service couplers with 1/4"SAE threads. Quick release half coupler attaches to R134a coupler on vehicle. Then open by turning the valve knob clockwise. Makes connection and disconnection much safer as valve controls pressure release. Colour coded for high and low pressure.



No.AC913

R12 to R134a

Conversion Adaptor Kit

Converts R12 gauge set which allows you to service R134a refrigerant gas air conditioning systems.

Contains: R134a 90° quick couplers and universal adaptor for R134a refrigerant tank.



No.AC933

Air Conditioner Pulley Puller

Specially designed puller for removing air conditioner compressor pulleys. Features extra wide yoke, with tapered jaws to fit into pulley grooves. Jaws are adjustable with locking screws. Short centre screw to allow puller to be used with air conditioner compressor still in position.

Range: 2" to 7.1/4"(50 to 185mm)

Reach: 1.9/16"(40mm)

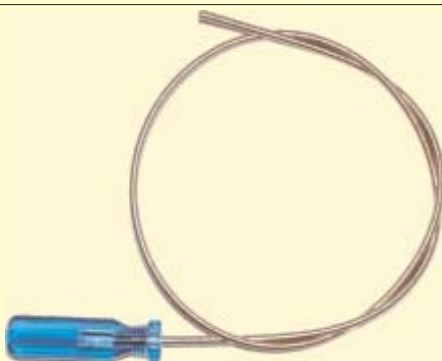
Universal application for most radiators



No.J3716

Air Conditioning Evaporator Fin Comb

Straightens, repairs & cleans radiator, A/C evaporator & A/C condenser fins. Six sided comb head with 6, 8, 10, 12, 14 & 15 fins per inch.



Refrigerant pipe cleaners have a flexible electro plated steel cable that can be fed through refrigerant pipes to clean and free contamination. Available in two lengths.

No.4134 24" Refrigerant Pipe Cleaner

No.4135 60" Refrigerant Pipe Cleaner



No.J4112

Deluxe Air Conditioning Clutch Hub Puller & Installer Set

Includes Orifice Tube Removal & Installer Set

Kit contains a complete offering of air conditioning compressor clutch hub pullers and installers, plus orifice tube removers & installers for GM, Ford, Chrysler and Asian imports. Comes complete with a compressor identification chart.



No.4111

Air Conditioning Clutch Hub Kit

Universal application for removing and installing air conditioning clutch plates. Suits the following hubs: GM DA6 V5, GM A6, R4, Kiki Diesel, 11-2 Nippon Denso, Ford FS6, Chrysler C171. Supplied in blow mold case.

No.4111-B Bearing for #4111



No.J4111

Air Conditioning Clutch Hub Kit

New super quality universal kit for removing and installing air conditioning clutch plates. Includes three metric & imperial installing adaptors, universal pulling plate, thrust bearings & fixing screws. Supplied in blow mold case.



No.J3700

Air Conditioning Clutch Plate Remover

Use for the removal of GM/Harrison clutch plates with R4 & A6 carbon seals.

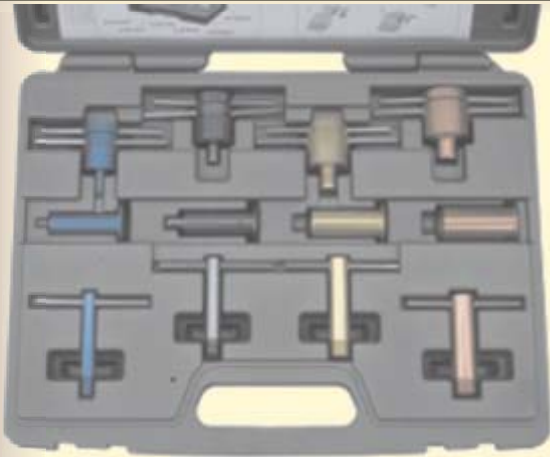


No.J5000

Air Conditioning Clutch Plate Installer

Use for the installation of GM/Harrison clutch plates with R4 & A6 carbon seals.





No.9700

Air Conditioning Seal Install & removal Set

Seal removal tool for worn seals on pipes. 1 inside grip seal removal tool. Seal installation tool for each current seal size (no. 6, 8, 10 and 12). For installing and removing Manuli "Euro" series airconditioning seals. Protects seals and pipes.



Aluminated High & Low Pressure Gauges

No.AC901A

R12 & R134A Air Cond. Manifold Gauge Set

Silicone vibration free gauges. Extruded aluminium body with sight glass for maximum safety.

No.AC30001 GM A6, R4, DA6, HR6, V5, & 6 Pole R4 A/C Seal Service Set

Includes all the specialized tools needed when replacing seals on GM compressors from the early sixties through to the current models, as well as Tecumseh HR-980.



Used with tools from
#AC-30001 set



No.AC30002 Special GM DA6 A/C Seal Service Set

For carbon type seals includes:

- AC31003 Seal Remover & Installer
- AC34002 Shaft Protector
- AC33005 Clutch Plate Remover (Metric)
- AC33006 Clutch Plate Installer (Metric)
- AC33004 O-Ring & Snap Ring Installer
- AC34003 O-Ring Installation Guide

- AC32001 Internal Snap Ring Pliers
- AC32002 O-Ring Seal Sleeve Remover
- AC32003 Seal Seat Remover
- AC31001 Seal Remover & Installer
- AC33001 Clutch Plate Remover
- AC33002 Clutch Plate Installer

- AC34001 O-Ring Installation Guide
- AC31002 Seal Seat Installer
- AC35001 Seal Protector
- AC33003 Ceramic Seal Installer
- AC39001 Universal Clutch Holding Tool
- AC33004 Clutch Plate Removal Arbor

Used with tools from
#AC-30001 set



No.AC30003

Ford FS6, Chrysler C171 Nippondenso 6P 148A Tecumseh HR-980 A/C Seal Set

Includes all the specialized tools needed when replacing seals on above compressors.

- AC33009 Clutch Plate Installer
- AC31005 Seal Seat Remover
- AC34005 Seal Seat Installer
- AC33010 Clutch Plate Remover
- AC34006 O-Ring Installation Guide

Used with tools from
#AC-30001 set



No.AC30004

York / Tecumseh / Chrysler RV2 Tow Cylinder A/C Seal Set

Includes all the specialized tools needed when replacing seals on above compressors.

- AC32004 Oil Level Dip Stick
- AC33007 5/8" x 2" x 11 NC Clutch Remover
- AC33008 5/8" x 2" x 18 NF Clutch Remover
- AC32005 Seal Remover
- AC34004 Seal Installer & Plate Aligner

Used with tools from
#AC-30001 set



No.AC30005

Sanden 507 / 508 / 510 A/C Seal Service Set

Includes all the specialized tools needed when replacing seals on above compressors.

- AC39002 Clutch End Plate Puller
- AC31006 Seal Remover & Installer
- AC35002 Seal Remover Sleeve
- AC34007 Clutch Face Plate Installer

Used with tools from
#AC-30001 set



No.AC30006 Sanden 505 & 575 A/C Seal Service Set

Includes all the specialized tools needed when replacing seals on above compressors.

AC31007 Seal Remover & Installer
AC31008L Seal Seat Remover
AC34008 Bearing & Pulley Installer
AC35003 Seal Protector Sleeve
AC34009 Pulley & Clutch Removal Jaws
AC34010 Shaft Protector Pilot

Used with tools from
#AC-30001 set



No.AC30007 Kiki Diesel A/C Seal Service Set

Includes all the specialized tools needed when replacing seals on above compressors.

AC34011 Drive Plate Installer
AC33011 Drive Plate Remover
AC31009 Retaining Ring Installer
AC34012 Puller Pilot
AC31010 Seal Remover & Installer
AC31011 Seal Seat Remover & Installer

Used with tools from
#AC-30001 set



No.AC30008 Hitachi & Mitsubishi A/C Seal Service Set

Includes all the specialized tools needed when replacing seals on above compressors.

AC34001 Nut Remover & Installer
AC34008 Bearing & Pulley Installer
AC32006 Seal Seat Remover
AC31003 Seal Remover & Installer
AC34013 Seal Remover Lock Nut
AC39003 Plug Remover & Installer Wrench

Used with tools from
#AC-30001 set



No.AC30009 Nippondenso 10 PA17 A/C Seal Service Set

Includes all the specialized tools needed when replacing seals on above compressors.

AC34014 Shaft Seal Remover
AC31015 Shaft Seal Installer
AC35004 Shaft Protector
AC31013 Internal Snap Ring Remover

Used with tools from
#AC-30001 set



No.AC30011 Ford FX-15/FS-10 A/C Seal Service Set

Includes all the specialized tools needed when replacing seals on above compressors.

AC33013 Shaft Seal Remover
AC34016 Shaft Seal Installer
AC35006 16 Spline Seal Protector
AC31013 Internal Snap Ring Remover



AC30010 Chrysler 6 C17 Seal Set

Includes all the specialized tools needed when replacing seals on above compressors.

AC35005 Shaft Seal Protector
AC31014 Shaft Seal Remover / Installer



No.AC30026 Orifice Tube A/C Service Set

AC30022 GM & Ford Orifice Tube R&R
AC30023 Ford (FOTCC) Orifice Tube R&R
AC30024 GM & Ford Screen Extractor
AC32025 Ford Aerostar Expansion Tube R&R



No.AC20021A R12 & R134a Refrigerant & Oil Charge Container Adaptor

Unique design makes servicing of R12 & R134a air conditioning systems with 12oz cans of refrigerant faster and easier. Also includes an adaptor for 4oz oil charge cans.



No.AC20022 A/C Can Valve

Specially designed for 16oz and smaller 12-1349 refrigerant cans. All metal construction for long life and durability. Built in safety valve, neoprene gasket assures leak-proof operation. 1/4"SAE Flared fitting 12x1.5mm Can thread.



No.AC20006 Easy Connect A/C Oil Injector

Excellent method for adding refrigerant oil or large amounts of UV leak detection dyes to the air conditioning system.

Threads: 1/4" FFL x 1/4" MFL.





No.AC20001 Air Conditioning System Flush Kit

Includes flush gun, hose, canister and canister adaptor. Designed to work with any light weight flushing agent that can be mixed with compressed air.



No.2037 A/C Pipe Crimp Off Tool

Crimping fixture permanently seals off air conditioning, fuel, brake, transmission pipes etc. Wind down T-handle with side handle support. Round jaw and ball anvil clamp terminate the pipe at the desired position.

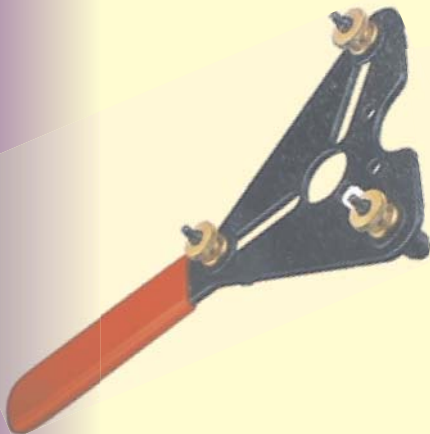
Capacity: 3/8"(10mm)
Length: 6.1/2"(165mm)



No.5111 Air Conditioning Ratchet Wrench

Four sizes in one offset wrench are specifically designed for servicing automotive, commercial, home air conditioners, refrigeration units and freezers. They have "finger tip" reversing feature at both ends. Square openings are used on male service valves, plug fittings, compressor valves and refrigerant charging tanks.

Sizes: 3/16" & 1/4" Square openings
5/16" & 3/8" Square openings



No.5112 Adjustable Air Conditioner Compressor Wrench

Adjustable three-stud design for, GM R-4 compressors. Also has applications on GM clutches.



No.4114 Two Ounce Compressor Oil Injector Tool

Adds compressor oil to air-conditioning systems. Use when adding refrigerant. Works in conjunction with manifold gauge, with adaptors for R134A systems.



Universal Automotive Thermometers

For use on all automotive air conditioning systems. 1"(25mm) Diameter stainless steel constructed gauge. Can also be used for checking radiator temperature. Comes with handy pocket storage case.

4101 Automotive Thermometer Dual Readings

Range: 0 to 220°F (-10° to 110°C)
Length: 5"(125mm)

4097 Automotive Thermometer

Range: 0 to 220°F Fahrenheit
Length: 5"(125mm)

4098 Automotive Thermometer

Range: -40 to 160°F Fahrenheit
Length: 5"(125mm)

4099 Automotive Thermometer

Range: -40 to 70°C Celcius
Length: 5"(125mm)



No.4420 Spring Lock Coupler Tool

Use this tool to disconnect the spring lock couplings found on air conditioning pipe lines. The double ended reversible feature will release the locking springs on all four sizes of spring lock couplers. Also used on fuel injection lines.

Sizes: 3/8", 1/2", 5/8", 3/4"
(10mm, 13mm, 16mm, 19mm)



No.J7238 A/C Spring Lock Coupling Tools

Used for separating spring lock couplers on Ford, Chrysler and Jeep vehicles. They provide the only means of separating air conditioning refrigerant pressure lines on these vehicles.

Set consists of:

- #J7239 3/4" A/C Coupling Tool
- #J7240 3/8" A/C Coupling Tool
- #J7241 1/2" A/C Coupling Tool
- #J7242 5/8" A/C Coupling Tool



No.U105 Ultra Violet Leak Detection Kit 12 Volt

- **No warm up time, no cool down period**
The 100 watt bulb is bright enough to detect the smallest leaks in most lighting conditions. Kit includes: 100 Watt high intensity UV lamp, 6m cord safety glasses, carrying case & full instructions.

No.U101DC Replacement Globe
100Watt/ 12V DC (2 per pack)



No.U50DC Ultra Violet Flash-Light - 12 Volt

- **No warm up time, no cool down period**
This lamp delivers substantially more U.V. output and makes it powerful enough to work in most lighting conditions. The small lamp size allows it to fit in confined spaces. Features 50 watts of power.

No.U501DC Replacement Globe
50Watt / 12V DC (2 per pack)
No.U147 Ultra Violet Lens



No.U55DC Ultra Violet Flash-Light Kit 12 volt

- **No warm up time, no cool down period**
This lamp delivers substantially more U.V. output and makes it powerful enough to work in most lighting conditions. The small lamp size allows it to fit in confined spaces. Features 50 watts of power.

Kit includes: U50DC Ultra Violet Flash-Light, safety glasses, carrying case & instructions.



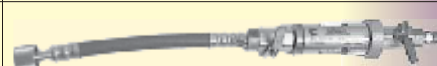
No.U56DC Ultra Violet Flash-Light Kit 12 volt

Kit includes: U50DC Ultra Violet Flash-Light, U925 Dye stick for A/C systems, A/C hose adaptors, samples of oil and water dyes, safety glasses, carrying case & instructions.



No.U57DC Ultra Violet Flash-Light Kit 12 volt

Kit includes: U50DC Ultra Violet Flash-Light, U910D dye stick, U703 injector, U900P A/C additive, samples of oil & water dye, safety glasses, carrying case & instructions.



No.U701 R-12 Fluorescent Additive Injector

Includes: 2 Metered ball valves and R12 anti blowback valve.

No.U701EXT 38" (960mm) Hose with quick disconnect couplers



No.U703 R-134A Fluorescent Additive Injector

Includes: 2 Metered ball valves & automatic low side quick disconnect coupler.

No.U703EXT 38" (960mm) Hose with quick disconnect couplers



No.U910D Dye Stick

Holds 25 shots of universal dye in disposable injector.



No.U710 Add-On Module Kit

2,3 & 4oz (60,90 & 120ml) modules increase #U701 & #U703 Injectors in any combination to a maximum of 9.1/4oz (278ml). Can also use to inject refrigerant oil.



No.U701EXT 38" (960mm) R-12 Hose with quick disconnect couplers



No.U925 Dye Stick Kit

Holds 25 shots of universal dye in disposable injector. Includes adaptors for R-12 & R-134A system.



Ultra Violet Additives	Pillow Packs	Bottles
Universal Engine Transmission etc.	U909P 12 x 1/4oz (7.5ml)	U909B 8oz (240ml) Bottle
Radiator Coolant additive	U990P 12 x 1/4oz (7.5ml)	U990B 8oz (240ml) Bottle
Universal A/C additive	U900P 12 x 1/4oz (7.5ml)	U900B 8oz (240ml) Bottle



No.U703EXT 38" (960mm) R-134A Hose with quick disconnect couplers





No.4420 Spring Lock Coupler Tool

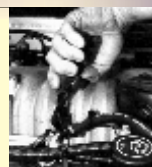
The double ended reversible feature will release the locking springs on all four sizes: 3/8", 1/2", 5/8" & 3/4" (10, 13, 16 & 19mm)



No.J7782 Ford Fuel Line Coupling Tool

The tool's fingers slip into the fuel line coupling, depressing the retaining collar as they go. This tool works on 1990 and newer 4.0L, 6 cylinder engines.

Fuel line disconnect pliers used to disconnect the spring lock couplings on fuel injection lines and air conditioning pipe lines. Special shaped jaws fit into coupling to release male connector.



No.4405 Fuel Line Coupler Pliers 5/16"(8mm)

No.4406 Fuel Line Coupler Pliers 3/8"(10mm)

No.4407 Fuel Line Coupler Pliers 1/2"(13mm)

No.4409 Fuel Line Coupler Pliers 5/8"(16mm)



No.J4710 8Pc. Fuel & Transmission Line Disconnect Tool Set

This deluxe disconnect tool set comes with these easy to use, compact spring lock coupling tools which are ideal for routine service on GM, Ford, Chrysler, Jeep and Asian air conditioning systems, fuel line connections, transmission oil cooler lines, and power steering lines.



No. J4410 Full Coverage Disconnect Coupling Set

All the tools required for disconnecting heater hoses, transmission oil cooler pipes, air conditioning pipes and fuel lines used on today's later model vehicles.



No.J4700 6Pc Air Conditioning & Fuel Line Disconnect Set

These easy to use, compact spring lock coupling tools are ideal for routine service on Ford, Chrysler, Jeep and Asian air conditioning systems and fuel line connections.

Sizes: 5/16", 3/8", 1/2", 5/8", 3/4" & 7/8"



No.J4900 9Pc. A/C - Fuel - Transmission Disconnect Tool Set

Set consists of:

Air Conditioning Spring Lock Coupling Tools: 3/8"(Red), 1/2"(Blue), 5/8"(Black), 3/4"(White)

Fuel Line Spring Lock Coupling Tools: 3/8"(Yellow) and 1/2"(Green)

Quick Release Fittings: 5/16" & 3/8"(White)

Transmission Cooling Hose Disconnect Tool.

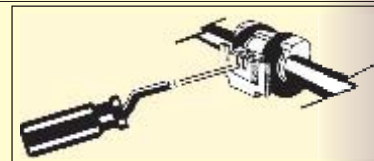


No.8922 Soft Pipe Cutter

Cutter handles soft rubber vacuum and fuel hoses etc. Handles made from PVC Blade can be re-sharpened.

Cutting capacity: 1.1/2"(38mm)

Length: 8.1/4"(210mm)



Suits New Toyota Spring Lock Couplers

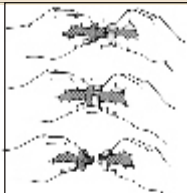


No.J2182 Air Conditioning Spring Lock Tool

How it works: Rotate spring lock clamp until slots are in comfortable position. Insert blade of release tool into slots and push in. Spring lock clip is then released.

Length: 6"(150mm)





No.J4404

Fuel Disconnect Tool Set

This set works on quick connect fuel lines on Ford, GM, and Chrysler and on the spring lock fuel line couplings on Ford's popular PFI system. They will not damage fuel lines or connectors.

Sizes: 1/4", 5/16", 3/8", 1/2", 5/8", 3/4" & 7/8"

6mm, 8mm, 10mm, 13mm, 16mm, 19mm, 22mm

Supplied with handy storage rack.



No.J4404-4

Deluxe Fuel Line Disconnect Tool Set

3Pc. External Disconnect Tool Set to suit: VT & later Commodore, AU & later Falcon, TJ & later Magna, GM Opel & Vectra.

Plus: 7Pc. Internal Disconnect Tool Set

Sizes: 1/4", 5/16", 3/8", 1/2", 5/8", 3/4", 7/8"

Works on all spring lock fuel line couplings fitted to today's EFI engines, also used on air conditioning lines.



No.J3706

Air Conditioning Spring Lock Coupling Tool Set

These easy to use, compact spring lock coupling tools are ideal for routine service on Ford, Chrysler, Jeep and Asian air conditioning systems.

Sizes: 1/4", 5/16", 3/8", 1/2", 3/4", 7/8"



No.2-7361

Fuel Line Disconnect Tool Set

It fits any 5/16"(8mm) or 3/8"(10mm) fuel line found on GM, Ford, Chrysler, Asian and European vehicles.

Available Separately

2-7370 5/16"(8mm) EFI fuel line disconnect tool.

2-7371 3/8"(10mm) EFI fuel line disconnect tool.



No.4403

GM Holden & Ford Disconnect Tool Set

This external set works on Norma-Quick connect fuel lines found on the late model Ford, GM, Chrysler & Mitsubishi vehicles. They simply clip over the connector and release the spring lock. They will not damaged fuel lines or connectors.



No.4400

GM Opel & Vectra Disconnect Tool

This external tool works on Norma-Quick connect fuel lines found on the late model GM Opel, Holden Vectra vehicles. They simply clip over the connector and release the spring lock. They will not damaged fuel lines or connectors.



No.4404

Fuel Line Disconnect Tool Set

This set is used for uncoupling quick release fittings on fuel lines.

Suits: Ford, Chrysler, Renault, GM, Opel, Holden, Fiat and many other makes with quick release fittings.

Sizes: 5/16"(8mm) 3/8"(10mm) + Angle Tip



No.J7810

Chrysler Fuel Line Disconnect Tool

Double ended offset specially shaped Chrysler fuel line disconnect tool.

Works on Chrysler 1994 and later models fitted with quick connect fuel lines.

Length: 15.1/2"(395mm)



No.4412

Fuel Line Disconnect Tool

This tool fits any 5/16"(8mm) or 3/8"(10mm) fuel line found on GM, Ford, Chrysler, Asian and European vehicles.



No.4230

17Pc. Universal Flexible Hose Clamp Tool

Includes all size sockets, screwdriver bits & 1/4" drive x 1/4" hex adaptor with 12"(300mm) flex shaft handle. Ideal for reaching into inaccessible areas.

Set Contains:

Phillips #1 & #2 x 1/4"Hex Bit
Slotted 4.5 & 6.5mm x 1/4"Hex Bit
1/4"Dr. 6pt. sockets in the following sizes:

Pozi-Dr #1 & #2 x 1/4"Hex Bit
Torx T10, T15 & T20 x 1/4"Hex Bit
5mm, 5.5mm, 6mm, 7mm, 8mm & 10mm
1/4"Dr. x 1/4"Hex adaptor.

**Nylon hose connectors,
unions, Tee's, Y's & elbows.
Popular assortment for hose repairs**



No.ST868

68Pc. Hose Connector Kit

Contains quantity of each of the following sizes in the different connections: 3mm, 5mm, 6mm, 8mm, 10mm, 12mm, 19mm. T Pcs, L Pcs, Y Pcs & Straight Pcs



No.920

7Pc. Hose Clamp Plier Set

This complete hose clamp plier set contains the most popular pliers to service hose clamps on and around the engine bay. Set includes the following pliers:

- A:** Remote Hose Clamp Pliers
- B:** Corbin Hose Clamp Pliers
- C:** Flat Band Hose Clamp Pliers
- D:** Angle Flat Band Clamp Pliers
- E:** Swivel Jaw Hose Clamp Pliers For "V" Slot Type Clamps
- F:** Clic-R Collar Clamp Pliers
- G:** Vacuum Hose Remover Pliers

**Pliers unlock clip, turn
pliers over to lock clip**



No.979

CLIC-R Collar Hose Clamp Pliers

For releasing and refitting the new style CLIC & CLIC-R reusable hose clamp clips. Pliers are made from drop forged alloy steel with spring actuated joint, insulated handles. **Overall Length: 7"(180mm)**



**For reaching hose clamps in
inaccessible areas**

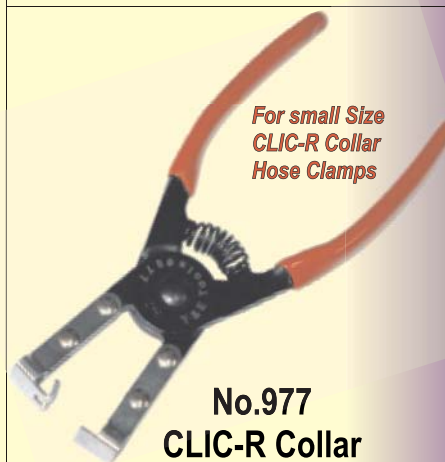
No.973

Remote Hose Clamp Tool

Ideal for removal of hose clamps in hard to reach places, with a long extended 25"(635mm) cable. Features a built-in ratchet mechanism that locks onto clamps in compressed position. It then expands clamp for easy removal and replacement from a remote position.

Suits clamp sizes from 11/16" to 2.1/2"(18 to 55mm)

No.973CABLE Replacement Cable for #973



**For small Size
CLIC-R Collar
Hose Clamps**

No.977

CLIC-R Collar Hose Clamp Pliers

For releasing and refitting the new style CLIC & CLIC-R reusable hose clamp clips. Pliers are made from drop forged alloy steel with spring actuated joint, insulated handles. **Overall Length: 7"(180mm)**





No.970

Swivel End Corbin Hose Clamp Pliers

Jaws swivel so you can hold Corbin clamps at any angle, double V-slot in each jaw, works on all clamps large or small. The built-in ratchet mechanism locks clamps in expanded position.

Length: 8.1/2"(215mm)



No.971

Flat Band Hose Clamp Pliers

Use to remove and install flat band hose clamps. Pliers inbuilt ratchet mechanism will hold clamp in expanded position. Jaws rotate to grip at any angle.

Length: 8.1/4"(210mm)

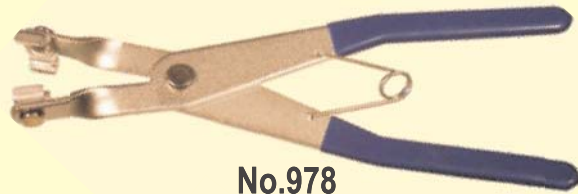


No.260

Corbin Hose Clamp Pliers

For easy removal and installation of Corbin ring type hose clamps. Double slotted jaws securely grip clamp. Drop forged alloy steel, insulated handles. Slip joint adjustment for use on small & large clamps.

Length: 8"(200mm)



No.978

Narrow Jaw Hose Clamp Pliers

A new design of hose clamp pliers with special shape swivel jaws that can adapt to many different kinds of hose clamp configurations. Tips and Jaws will swivel 360 degrees.

Length: 9.1/2"(240mm)



No.975

Constant Tension Clamp Pliers

Unique tool opens constant tension (MOBEA) bands for both heater and radiator hoses. Jaws pivot to almost any angle. The built-in ratchet mechanism locks clamps in expanded position.

Length: 13"(335mm)



No.974

Angled Flat Band Hose Clamp Pliers

45° Angle offset head enables flat band hose clamp pliers to remove and install clamps in hard to reach areas. Pliers feature rotating angled jaws to hold clamp at any angle, a ratchet locking mechanism holds clamps in the open position. Heat treated alloy steel.

Length: 9"(230mm)



Ideal for the removal of frozen-on spark plug boots



No.976

Hose & Cable Plier Set

Two piece set is ideal for removal and installation of automotive hoses and leads. Swivel spring loaded jaws allow access to the most difficult of places.

Capacity: 1/4" to 3/4"(6 to 19mm)

Length: 8.1/2"(215mm) & 10"(255mm)



No.982

Hose Remover Pliers

YF-62153



No.980

Hose Clamp Pliers

FT-346